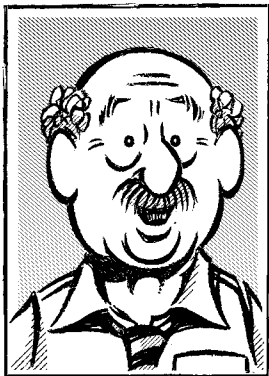


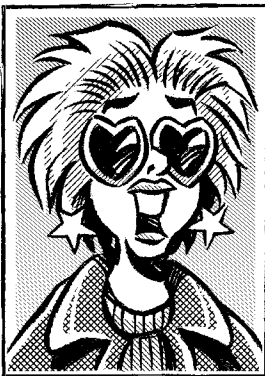
HOW CAN YOU TELL IF IT'S GONNA BE A REALLY HARD WINTER?

Bailey
©0



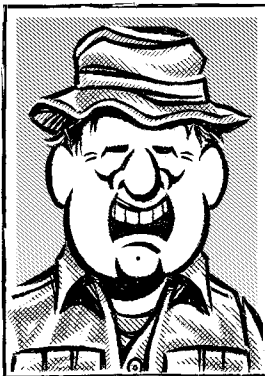
"WHEN TH'
FROGS GROW
HAIR."

DEWEY SCHMELL
FERTILIZER SALES



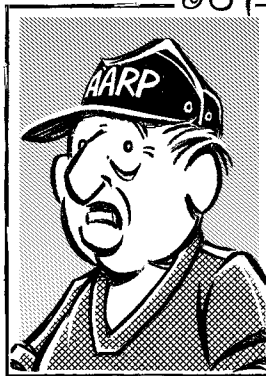
"WHEN THE
MAPLE TREES
TURN BLUE."

IMA WHOOT
HOUSEWIFE



"WHEN TH'
BIRD DOGS
FLY SOUTH."

KENT SHUTE
HUNTING GUIDE



"WHEN THE
WEATHERMAN
SAYS MILD."

JUSTIN TYME
RETIRED