

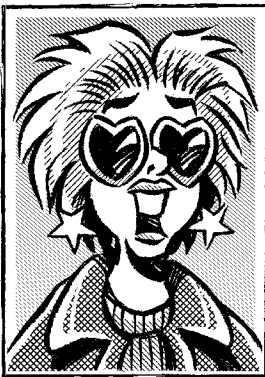
# HOW CAN YOU TELL IF IT'S GONNA BE A REALLY HARD WINTER?

*Bailey*  
©0



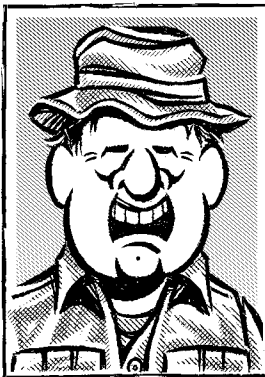
"WHEN TH'  
FROGS GROW  
HAIR."

DEWEY SCHMELL  
FERTILIZER SALES



"WHEN THE  
MAPLE TREES  
TURN BLUE."

IMA WHOOT  
HOUSEWIFE



"WHEN TH'  
BIRD DOGS  
FLY SOUTH."

KENT SHUTE  
HUNTING GUIDE



"WHEN THE  
WEATHERMAN  
SAYS MILD."

JUSTIN TYME  
RETIRED